

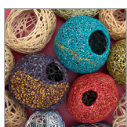
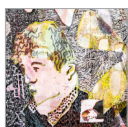
# The Textile Study Group

The Textile Study Group (TSG) is a professional and highly experienced group of nationally and internationally recognised textile artists and tutors, well known for innovative and challenging approaches to textile art practice and teaching, both in the UK and abroad. The group, first established in 1973, supports members in achieving the highest standards of teaching and exhibiting.

TSG members place great importance on the development of their own individual art practice in their role as educators. Based largely in the UK, members meet for two weekends a year in a supportive but challenging environment to participate in workshops led by outside tutors from a wide range of disciplines. They also undertake a critical 5-year review with an appointed mentor. This is a crucial and valued opportunity to reflect on their own practice and teaching, as well as to engage in debates about current developments in the world of textiles.

The objectives of the group are to promote and advance the practice of stitch and textile art through a broad spectrum of educational activities: workshops, courses, lectures, publications and exhibitions. Members aim to deliver expertise and excellence in various areas of textile arts to inspire students of all ages and abilities.

The TSG runs an annual residential Summer School tutored by three group members. Each year's Summer School offers course participants an opportunity to work in a supportive environment and aims to encourage and inspire students to widen their horizons and extend their ways of working. It is open to all those who want a few exciting days working in a friendly and inspiring atmosphere.



[www.textilestudygroup.co.uk](http://www.textilestudygroup.co.uk)

## Address

Hillscourt Hotel and Venue, Rose Hill, Rednal, Birmingham B45 8RS  
[www.hillscourt.co.uk](http://www.hillscourt.co.uk)

## The Venue

Hillscourt is a delightful venue set in 25 acres of beautiful grounds and gardens. The Victorian house dates back to 1897 and retains many of its original features. It is located in leafy South Birmingham, near to Bromsgrove, Worcestershire and close to the Lickey Hills.

The venue is easily accessible by road being a 5 minute drive from the M5 Junction 4 and 5 minutes from the M42 Junction 1. The nearest station is at Longbridge and the nearest airport is Birmingham International Airport.

There is ample free parking available.

## More Details

The summer school begins at 2.00pm on Monday 15 July, and ends after afternoon tea on Thursday 18 July 2024.

All bedrooms are to be vacated by 9.30am on the Thursday morning.

## Costs

All bedrooms are ensuite.

Full board, course fee, accommodation £735

International students £756

Non resident day delegate and course fee £578, which includes lunch, evening meal and workshops in the evenings.

The course fee does not include lunch on Monday 15 July.

If you are making a long journey, bed and breakfast for Sunday and/or Thursday night can be arranged by you directly with the centre, not through the TSG. This also applies to partners who wish to stay there.

Those receiving in-service grants from colleges should send the Textile Study Group the course fee and claim back a refund from their college.

## Booking

Booking, payment and cancellation information is in the accompanying booking details. Download the booking details from [www.textilestudygroup.co.uk](http://www.textilestudygroup.co.uk)

## Terms and Conditions

The booking details include important Terms and Conditions in line with our liabilities to the centre. Please ensure you read these carefully.

## Contact

For any queries about the Summer School please contact [polly.pollock@textilestudygroup.co.uk](mailto:polly.pollock@textilestudygroup.co.uk)



**SUMMER  
SCHOOL  
2024**

**textile  
study group**

artists and tutors sharing  
ideas imagination and skills

## Travelling Lines

A residential Summer School  
tutored by  
Textile Study Group members  
Open to everyone

Hillscourt Hotel and Venue,  
Rose Hill, Rednal,  
Birmingham B45 8RS  
Monday 15 – Thursday 18 July 2024

**Jane McKeating**  
**Polly Pollock**  
**Dorothy Tucker**

Travelling, based on a journey or made with marks, lines, stitch and by interweaving materials, is the starting point for our exciting Summer School in the comfortable surroundings of Hillscourt.

Immerse yourself and explore form with Polly Pollock's exquisitely simple stitched and woven structures, tell stories of your travels with Jane McKeating or work with Dorothy Tucker as she leads you on a journey with stitch.

Your enthusiastic and experienced tutors will encourage and support you on your journey as you travel together.

## Narrating Personal Journeys with Jane McKeating

Together we will explore journeys and map these through drawing, collage, applique and stitch.

Your personal journeys might be from daily life: a trip to the bottom of the garden, the school run, downstairs to make a cup of tea; or long ones, perhaps to dramatic or inspiring places. They might be journeys you hope to make, or imaginary journeys. The ordinary or the extraordinary. What do you notice, what inspires you?

We will look at examples of historic and contemporary artists who work with these themes. We will create individual responses, using imagery you might want to bring along, together with remembered images, combining these to create imaginative, experimental surfaces and narratives. The approach will be playful, looking at methods and materials which help us express our own stories, to create a series of small-scale works on both cloth and paper.



*Jane works with stitch and print to create visual stories in both cloth and paper. Having taught at Manchester School of Art for 30 years, heading the BA(Hons) Embroidery Course and as Associate Head of Design, Jane now works from her studio in Stockport. She is a member of the 62 Group.*

[textilestudygroup.co.uk/members/jane-mckeating](http://textilestudygroup.co.uk/members/jane-mckeating)

## Shape – Form – Basket with Polly Pollock

Lines joined up form shapes. Shape and lines intersecting in space create form. Form becomes basket.

After considering the qualities of lines through drawing and mark-making, you will explore how materials can represent these. Baskets are created by linear materials interweaving. You will experiment with materials, colour, scale, density, surface, stitch... Your work might be materials/technique led, or informed by a more personal theme, like tracing the steps of a familiar walk.

Basketry is a slow and meditative craft, allowing time for contemplation and experimentation; it is rooted in ancient traditions, with enormous potential for experimentation and innovation. You may focus on a single piece, or a small collection of exploratory samples to develop further in your own time.



*Polly has been making and teaching basketry for many years. Her long basketry journey began with an interest in textiles, her work having gone through many transitions. For the past 15 years Polly has worked increasingly with paper, exploring more personal themes, most recently in her work "Kitchen Drawer: Emergency Home Repairs" for the TSG Making 50 exhibition.*

[textilestudygroup.co.uk/members/polly-pollock](http://textilestudygroup.co.uk/members/polly-pollock)

## Tracks, Tracings and Trails with Dorothy Tucker

Come to enjoy working with tools and materials, and with care and attention to detail respond to what happens in an easy, on-going and open-ended way.

Don't be daunted, together we will explore travelling lines made with unconventional tools, follow tracings on paper and cloth with needle and thread, and make tracks along and across patched and pieced backgrounds. We will make changes by cutting away or adding fragments of colour and contrasts in texture.

What we discover along the way about combining paper and cloth, connections between hand stitching with drawing, and what we choose to keep, will evolve into a reference collection and/or small freely worked textile pieces.



*Dorothy now lives in Holt, Norfolk. On a free-lance basis she gives talks and tutors workshops in the UK and abroad. In January 2020 she travelled with a group to West Bengal and Odisha in search of kantha, the soft embroidered quilts traditionally made from recycled saris, which inform the way she makes her contemporary stitched textiles.*

[textilestudygroup.co.uk/members/dorothy-tucker](http://textilestudygroup.co.uk/members/dorothy-tucker)