

The Textile Study Group

The Textile Study Group (TSG) is a professional and highly experienced group of nationally and internationally recognised textile artists and tutors, well known for innovative and challenging approaches to textile art practice and teaching, both in the UK and abroad. The group, first established in 1973, supports members in achieving the highest standards of teaching and exhibiting.

TSG members place great importance on the development of their own individual art practice in their role as educators. Based largely in the UK, members meet for two weekends a year in a supportive but challenging environment to participate in workshops led by outside tutors from a wide range of disciplines. They also undertake a critical 5-year review with an appointed mentor. This is a crucial and valued opportunity to reflect on their own practice and teaching, as well as to engage in debates about current developments in the world of textiles.

The objectives of the group are to promote and advance the practice of stitch and textile art through a broad spectrum of educational activities: workshops, courses, lectures, publications and exhibitions. Members aim to deliver expertise and excellence in various areas of textile arts to inspire students of all ages and abilities.

The TSG runs an annual residential Summer School tutored by three group members. Each year's Summer School offers course participants an opportunity to work in a supportive environment and aims to encourage and inspire students to widen their horizons and extend their ways of working. It is open to all those who want a few exciting days working in a friendly and inspiring atmosphere.



www.textilestudygroup.co.uk

Address

Hillscourt Hotel and Venue, Rose Hill, Rednal, Birmingham B45 8RS
www.hillscourt.co.uk

The Venue

Hillscourt is a delightful venue set in 25 acres of beautiful grounds and gardens. The Victorian house dates back to 1897 and retains many of its original features. It is located in leafy South Birmingham, near to Bromsgrove, Worcestershire and close to the Lickey Hills.

The venue is easily accessible by road being a 5 minute drive from the M5 Junction 4 and 5 minutes from the M42 Junction 1. The nearest station is at Longbridge and the nearest airport is Birmingham International Airport.

There is ample free parking available.

More Details

The summer school begins at 2.00pm on Monday 18 July, and ends after afternoon tea on Thursday 21 July 2022.

All bedrooms are to be vacated by 9.30am on the Thursday morning.

Costs

All bedrooms are ensuite.

This year we return to 16 students in each group. Hillscourt are not able to confirm their prices until later in the Autumn but we expect a price rise of 7%. This rise is reflected in the costs below and we will confirm the final cost to booked students as soon as we are able.

Full board, course fee, accommodation £650

International students £670

Non resident day delegate and course fee £470

This includes lunch, dinner and workshops in the evenings.

The course fee does not include lunch on Monday 18 July.

If you are making a long journey, bed and breakfast for Sunday and/or Thursday night can be arranged when booking. This also applies to partners who wish to stay at the centre.

Those receiving in-service grants from colleges should send the Textile Study Group the course fee and claim back a refund from their college.

Booking

Booking, payment and cancellation information is in the accompanying booking details. Download the booking details from www.textilestudygroup.co.uk

Terms and Conditions

The booking details include important Terms and Conditions in line with our liabilities to the centre. Please ensure you read these carefully.

Contact

For any queries about the Summer School please contact
polly.pollock@textilestudygroup.co.uk



**SUMMER
SCHOOL
2022**

**textile
study group**

artists and tutors sharing
ideas imagination and skills

Making A Point

A residential Summer School
tutored by
Textile Study Group members
Open to everyone

Hillscourt Hotel and Venue,
Rose Hill, Rednal,
Birmingham B45 8RS

Monday 18 – Thursday 21 July 2022

Bobby Britnell

Jan Miller

Mary Sleight

Your tutors will be working with
design, composition and ideas as
fundamental parts of their courses.

Choose a workshop which will lead
you through compositional exercises
to develop large scale work; work
with ideas of simplifying, paring back
to reveal the essence of an idea; or
work with a collection of cloth as
your starting point for building
thoughts and ideas.

All three experienced and
enthusiastic tutors will encourage
and support you during their
inspirational courses.

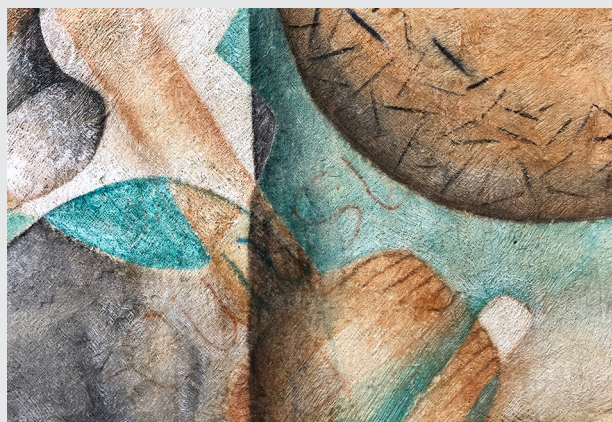
Composition: big | bold | brave

with Bobby Britnell

Composition is one of the key elements in art and design, whether you are creating a drawing, painting or involved with any visual art form. It provides the viewer with the tools needed for making sense of finished works.

We will begin by looking at how a composition can be changed by the simple placing of a horizontal line, the size of motifs in relation to the picture plane, and the positioning of these motifs. We will investigate some of these ideas through a number of creative exercises onto paper and from these create some large bold monochromatic drawings.

Learning from master artists is paramount in understanding these concepts, so artist research will be fundamental in cementing personal ideas. Be prepared for some dramatic effects and large scale works on fabric which explore these concepts in challenging ways.



Bobby runs and teaches courses from her studio in South Shropshire and attracts students from all over the world. She also brings in the best UK tutors. She exhibits and teaches all over the country and abroad and was a tutor on the BA (Hons) programme for the Julia Caprara School of Stitched Textiles. She published her first book in 2013, which has been reprinted in 2021.

textilestudygroup.co.uk/members/bobby-britnell

Building with cloth: fold | layer | wrap

with Jan Miller

Building with cloth examines household fabrics from 'raw' materials to rags to recycled. How and where your collection of textiles were constructed, washed, prepared, folded, stored, repaired, handed down, re-purposed, may uncover a history – real or imagined.

Record: marks, colours, ideas, drawings, collages

Work: with mixed media to construct and test

Make: samples, the starting point of a series

Review/edit: small changes make big differences

Observation of known artists' work may inspire an approach that can be adapted to your developing experiments: 2D or 3D; scale up/down; focus on patterns and rhythms; manipulate with folds, layers, coiling, wrapping; construct shapes. A workshop to develop your own method of research; a sketchbook and samples that may stand alone; the potential to create future work.



Jan has an MA Textile Culture, is a freelance artist based in Norwich and a member of the Costume and Textile Association for Norfolk Museums.

She participates in local Open Studios and is an exhibiting member of the 62 Group. Her work is inspired by coastal walks and local landscapes.

textilestudygroup.co.uk/members/jan-miller

Coming into view: remove | reduce | refine

with Mary Sleigh

'Less is more' is the catch phrase for this workshop. Starting with something familiar – kept and treasured, given as a present or collected on a walk – we shall define its essence through experiments, sampling and recording significant elements. These discoveries will be the basis of new work revealing unexplored aspects of a familiar object.

We will explore, through the use of mixed media, possible ways of working allowing for change through experimentation and making. Deconstructing, paring back, obscuring and revealing are some of the activities in working towards a fresh approach, seeing something with new eyes. Individual approaches, innovation and a willingness to try something new will be encouraged, alongside discussion and personal tutorials. Results may be a set of individual samples or the start of a new piece of work capturing the qualities discovered in the workshop.



Having taught in Further Education for many years, Mary now works with groups developing ideas and extending their practice. Some courses are currently online workshops.

She enjoys the freedom, time and challenge in writing, pursuing her own creative work and exhibits both in UK and abroad.

textilestudygroup.co.uk/members/mary-sleigh