

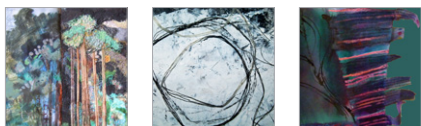
# The Textile Study Group

The Textile Study Group is made up of highly qualified textile artists who have built up a reputation both here and abroad. The group is committed to raising the standard of embroidery. They are known for their exciting approach and for their ability to impart knowledge and enthusiasm for all aspects of textiles both cutting edge and traditional.

For many years Textile Study Group members have been active at the forefront of embroidery and textile education. Many members teach in schools or colleges of further, higher and adult education, while others are involved with groups in the community. Several members have successfully published books and magazine articles and lectured and tutored abroad. The Textile Study Group has recently been involved in a number of very exciting projects in partnerships with museums, where educational programmes and travelling exhibitions have helped to heighten awareness of the diversity of textiles.

To sustain the development of their professional practice every member attends annual Textile Study Group weekend courses and presents their work for critical appraisal every five years. The group interaction during these courses and the critical appraisals provide both the support and the challenges necessary to sustain lively, dynamic work. They exhibit textiles in a variety of venues and galleries.

Most Textile Study Group members are happy to consider invitations to give talks, tutor workshops and residential courses, and contribute to educational projects, both within the United Kingdom and abroad.



[www.textilestudygroup.co.uk](http://www.textilestudygroup.co.uk)

## The Venue

This year we are holding our Summer School at James College, York University ([www.york.ac.uk/colleges/james](http://www.york.ac.uk/colleges/james)) on the main campus in Heslington, south-east of York. The campus is set out in beautiful grounds with extensive gardens, sculptures and lake. The ancient historic city of York is renowned for its exquisite architecture, cobbled streets and iconic York Minster.

The campus is within walking distance or a short bus or taxi ride from the city Centre. There are good rail links, easy access to major road networks and short travel time to international airports.

## More Details

The summer school begins at 2.00pm on Monday 25th July, and ends after afternoon tea on Thursday 28th July 2016.

On Monday the studios will be open from 1.00pm. Storage facilities will be available in the event of rooms not being available till 2.00 pm. All bedrooms must be vacated by 9.30am on the Thursday morning.

## Costs

All bedrooms are single ensuite.

Course fee, accommodation and full board	£550
Non resident	£450

*Non residential students are reminded that the course includes dinner and workshops in the evenings.*

If you are making a long journey, Bed and Breakfast for Sunday night can be arranged at extra cost through the booking secretary.

The course fee *does not* include lunch on Monday.

Please note that Car Parking is pay & display. Charges are £1 per hour up to 4 hours or £6 up to 10 hours. Parking is free at weekends and from 18.00 – 08.00 each morning. Permits for 4 days can be bought but incur VAT.

## Contact

For any queries about the Summer School please contact [gwenhedley2@gmail.com](mailto:gwenhedley2@gmail.com)

## Other Information

Maps, travel instructions and your course requirements will be sent out before commencement of the course.

*Please note*

If you cancel within 7 days of booking a full refund of deposit will be given.

**Only if the place is filled** will a refund of fees (less deposit) be considered.

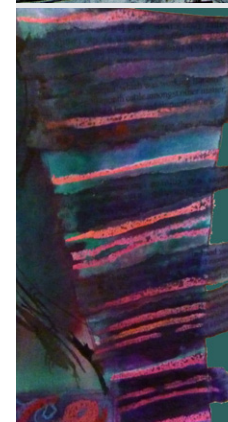
Cancellation by 30th April 2016..... 75% refund

Cancellation by 31st May 2016..... 50% refund

Course fee insurance is highly recommended and is your responsibility.

The Textile Study Group reserves the right to limit the participation in the course of any student.

In the exceptional circumstances of a tutor being unavailable, the Textile Study Group reserves the right to replace them with another Textile Study Group tutor.



**SUMMER  
SCHOOL  
2016**

**textile  
study group**

artists and tutors sharing  
ideas imagination and skills

## Drawn Together

A residential Summer School  
tutored by  
Textile Study Group members  
Open to everyone

*venue and dates this year*  
James College, University of York,  
Heslington, York YO10 5DD  
Monday 25th – Thursday 28th July 2016

**Bobby Britnell  
Alison King  
Sheila Mortlock**

Bobby, Alison and Sheila are approaching the topic of Drawn Together from different points of view. They are offering a wonderful melting pot of ideas: ways of working, getting all those ideas out of your head and making them real. You will have opportunities to explore ways of recording and developing your ideas, some of which may be new to you. Within a supportive and encouraging atmosphere this year's Summer School aims to help students to widen their horizons and create an exciting few days of new possibilities for everyone.

## Drawn to the Light with Alison King

*"The woods are lovely, dark and deep"*

Robert Graves

There are few sights more uplifting than the view, through woodland, to an open landscape. Pathways may lead us through with ease, dense branches impede our progress. Many factors can influence the scene, from the season to the time of day. It can be a moment of mystery, magic or even comfort.

You will be encouraged to experiment with a wide range of techniques and media, starting with some simple drawing to better understand the very nature of trees. Variations of paint, print and collage will be combined with needle weaving and hand or machine stitch to achieve the final outcome – your very personal interpretation of that moment in the wood.



Alison King trained as a painter but discovered a passion for textiles through years of teaching. She believes that encouragement is the key to creativity and students learn through experimentation in a relaxed atmosphere. Alison is a former member of the 62 Group and past Chairman of both the Textile Study Group and Edge – Textile Artists Scotland. [textilestudygroup.co.uk/members/alison-king](http://textilestudygroup.co.uk/members/alison-king)

## Drawing the Line with Bobby Britnell

*"Drawing is putting 'a line' around an idea"*

Henri Matisse

"A line is a mark or stroke, long in proportion to its breadth, made with a pen, pencil, tool, etc., onto a surface." This course will have students examining both the simplicity and complexity of 'line' as an inspirational source, by using a variety of 'drawing' tools and mixed media surfaces.

Accessible drawing methods, both traditional and experimental, will all be considered in relation to the exercises introduced, with students quickly building up inspirational boards full of ideas and design possibilities, for personal interpretation into fabric and stitch. Artist research will offer further insights into the development of ideas, with the whole course culminating in a useful portfolio of original works.



Bobby runs and teaches courses from her studio in South Shropshire and attracts students from all over the world. She also brings in the best UK tutors. She exhibits and teaches all over the country and abroad and was a tutor on the BA (Hons) programme for the Julia Caprara School of Stitched Textiles. She is an exhibiting member with 'Through our Hands' and published her first book in 2013. [textilestudygroup.co.uk/members/bobby-britnell](http://textilestudygroup.co.uk/members/bobby-britnell)

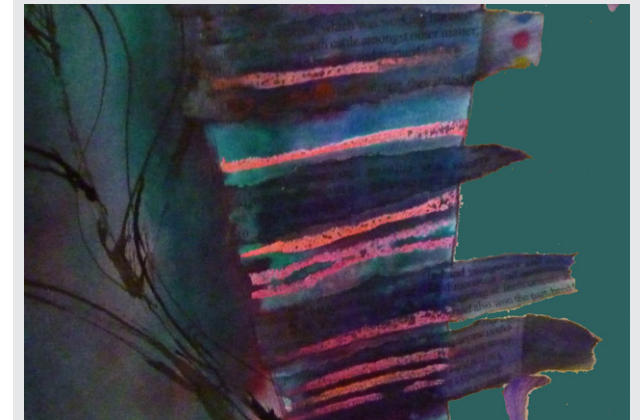
## Drawn to the Edge with Sheila Mortlock

*"Life is a travelling to the edge of knowledge,  
then a leap taken."*

D. H. Lawrence

Cutting edge, water's edge, gilt edged, edge of darkness, edgy, jagged edge are just some of the common phrases regularly used in conversation and yet the 'edge' is an underused area when creating. We usually work within the plane or surface of the paper or canvas, centred maybe, with little consideration given to the edge; however, I believe it offers us a rich area to explore.

This workshop will compel students to consider how the edge has its part to play within the development of any design. Students will explore the properties of the edges of the given paper and through a sequence of exercises will develop ideas for textiles.



Sheila Mortlock studied printed textiles and embroidery at Duncan of Jordanstone College of Art, Dundee, and for many years has taught City & Guilds Stitched Textile courses. She is a past Chairman of Edge – Textile Artists Scotland and regularly runs workshops for textile groups. Last year she was invited to teach at the Association of New Zealand Embroiderers' Guilds Conference in New Plymouth. [textilestudygroup.co.uk/members/sheila-mortlock](http://textilestudygroup.co.uk/members/sheila-mortlock)